

# Installation Guide

## #448 Roll-Grate Frame

**Note:** Before installation begins, make sure that the traffic direction is correct & the rails run perpendicular to the traffic flow.

### 1. Prepare the floor recess:

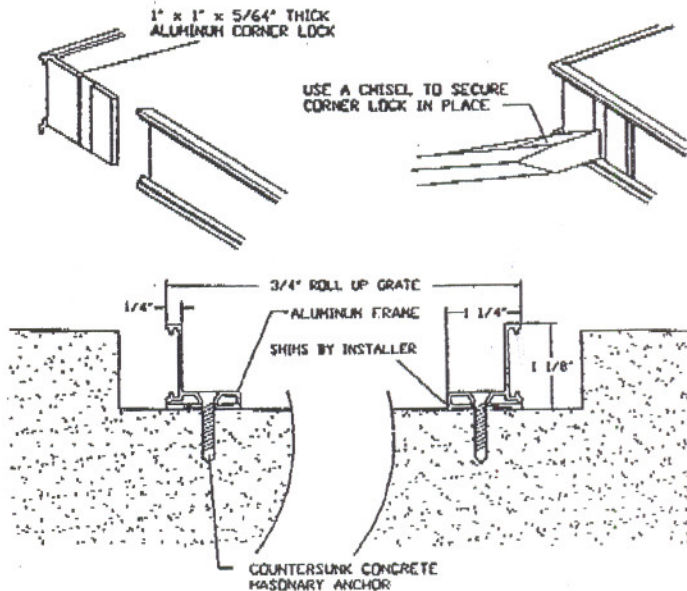
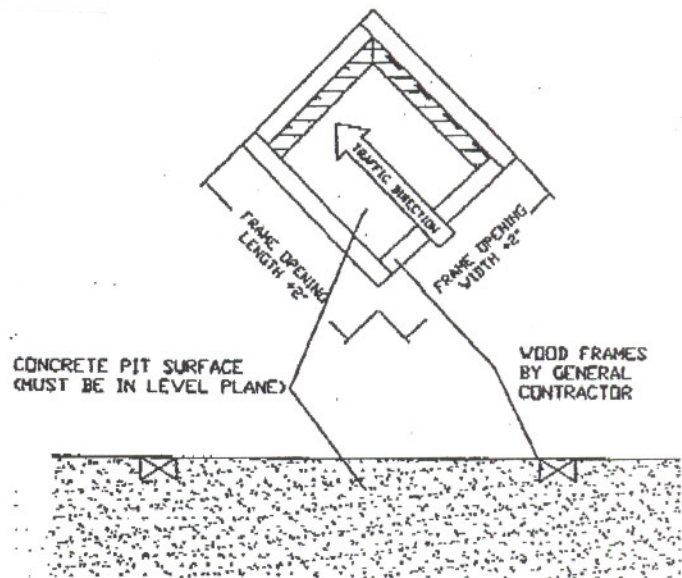
Prepare a recess in the concrete flooring where the grate frame will be located. The recess should be at least:

- 1-1/8" deep (subtract finished floor depth from the frame depth - this will be your total block out depth)
- 4" wider than the outside dimensions of the frame - this allows 2" on all sides to maneuver the frame into position

### 2. Assemble frame, drill anchor holes and secure frame in recess.

After the recess has been formed and prepared:

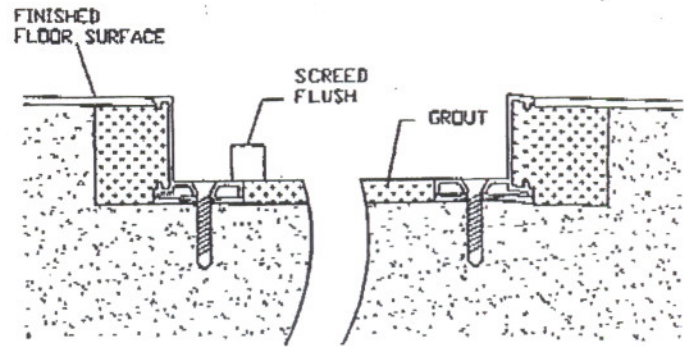
- assemble frame pieces using the corner locks provided at each corner - the frame has been mitered to allow for quick assembly
- set assembled frame into the recessed opening - square and plumb the frame to the opening and finished floor - **NOTE: if necessary, shim under the frame sections so that the top edge of the frame is flush with the finished floor**
- once the frame is in place, drill holes in frame every 2' for the screws and secure using hardware provided



### 3. Pour concrete/grout and level

- pour concrete/grout in the center and around edges flush with the surrounding concrete
- level the concrete/grout in the center of the frame by using a board slightly shorter than the width of the frame

**Note:** Be very careful to insure concrete is smooth and level with the frame - this will allow the grate to lay flat and avoid rocking



### 4. Recheck all dimensions

Before concrete sets, recheck that:

- the frame sides are straight
- the frame corners have correct angles so the grate will fit properly
- all inside dimensions of the frame are accurate according to the drawing measurements

If the frame bows inward, use spreaders inside the frame until the concrete is thoroughly set.

**IMPORTANT:** The grate is made to fit snugly into the frame according to the drawing - *we* cannot be responsible for problems that result from improperly installed frames.

### 5. Protect the frame edges

When the concrete has hardened, install plywood or other material in the recess to protect the frame edges from damage until the grate is installed.