

The Mat King is a d/b/a/ of Geoffrey Drew Marketing, Inc.

740 West End Avenue; Suite 1

New York, NY 10025

Phone: (646)998-4208 Fax: (646)998-4073

The Mat King

In-the-Metal Slip Resistant Steel Floor Plate

Technical Data Sheet

Page 1 of 5

Composition: Manufactured through a patented CNC (Computer Numerical Control) laser deposition process that allows traction features to be applied on a variety of metal grating and flooring products providing a DCOF (Dynamic Coefficient of Friction) that meets the traction requirements of the OSHA (Occupational Safety and Health Administration) and the ADA (Americans with Disabilities Act) guidelines.

Method of Use: **In-the-Metal Slip Resistant Steel Floor Plate** and all other metal equipment that is equipped with the **In-the-Metal Slip Resistant** features are intended to be deployed where the situation on the ground is known to be slippery and, therefore, to be a potential slip and fall hazard, and one that will repeat itself over-and-over again.

Operating Requirements: **In-the-Metal Slip Resistant Steel Floor Plate** and all other metal devices equipped with the **In-the-Metal Slip Resistant** features are to be installed in such a way as to provide users with a secure substrate and footing so that users are able to depend on the stability of the underlying support. The enhanced traction features on surface of **In-the-Metal Slip Resistant Steel Plate** and all other metal devices equipped with the **In-the-Metal Slip Resistant** features will then be able to offer the user the secure traction for which they are looking and on which they will be able to depend.

Common Applications: **In-the-Metal Slip Resistant Steel Floor Plate** and all other metal devices equipped with the **In-the-Metal Slip Resistant** features are most often used in situations that are or can often become slippery due to exposure to petroleum products, such as lubricants, greases, motor oils or cooking oils and other such slippery substances.

Warnings: **In-the-Metal Slip Resistant Steel Floor Plate** and all other metal devices equipped with the **In-the-Metal Slip Resistant** features are able to offer enhanced

The Mat King is a d/b/a/ of Geoffrey Drew Marketing, Inc.

740 West End Avenue; Suite 1

New York, NY 10025

Phone: (646)998-4208 Fax: (646)998-4073

The Mat King

In-the-Metal Slip Resistant Steel Floor Plate

Technical Data Sheet

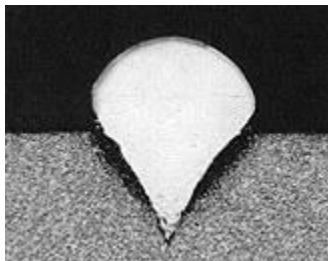
Page 2 of 5

traction in adverse conditions, but users must be aware that nothing is perfect and being properly prepared by wearing appropriate foot gear, padded clothing, a protective helmet in the event that one is protected against injuries in case one does fall for some reason.

In-the-Metal Slip Resistant Steel Floor Plate should not be installed in areas subject to steel-wheeled vehicular traffic.

Product Drawings: In-the-Metal Slip Resistant Steel Floor Plate (individual unit drawing):

Cross-sectional view of an individual In-the-Metal Slip Resistant Floor Plate element. (Please Note: This image is the closest thing we have to a “drawing” of the “element” itself).



The following Drawing is of a metal rung cover that has been “populated” with In-the-Metal traction elements represented by the small dash like items on thearc surface of the ladder rung cover.

The Mat King is a d/b/a/ of Geoffrey Drew Marketing, Inc.

740 West End Avenue; Suite 1

New York, NY 10025

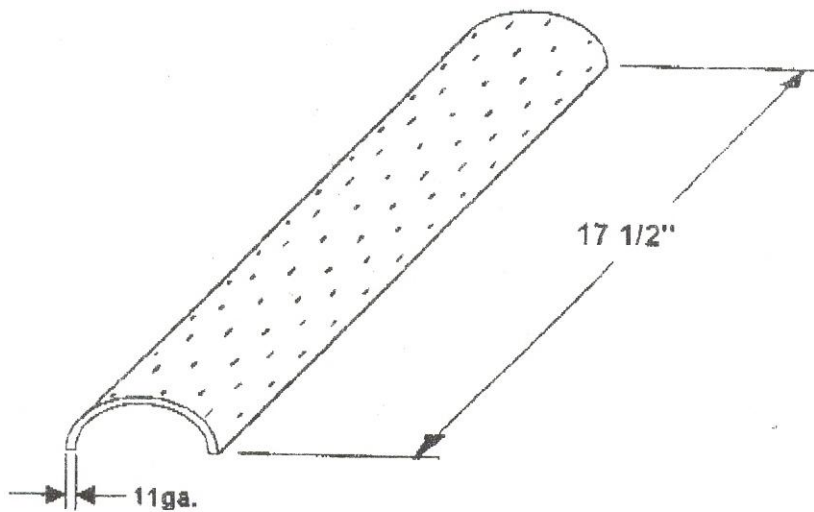
Phone: (646)998-4208 Fax: (646)998-4073

The Mat King

In-the-Metal Slip Resistant Steel Floor Plate

Technical Data Sheet

Page 3 of 5



****SHIP UNPAINTED****

The Mat King is a d/b/a/ of Geoffrey Drew Marketing, Inc.

740 West End Avenue; Suite 1

New York, NY 10025

Phone: (646)998-4208 Fax: (646)998-4073

The Mat King

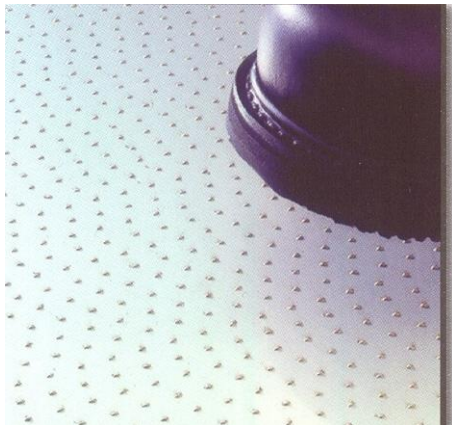
In-the-Metal Slip Resistant Steel Floor Plate

Technical Data Sheet

Page 4 of 5

In-the-Metal Slip Resistant Steel Floor Plate (typical in plant layout):

The following image typifies the way a piece of metal flooring will be covered or populated with the **In-The-Metal Slip Resistant** elements and how the sole of a user's shoe will be completely certain to come in contact with the traction surface for the safest possible way to proceed.



The Mat King is a d/b/a/ of Geoffrey Drew Marketing, Inc.

740 West End Avenue; Suite 1

New York, NY 10025

Phone: (646)998-4208 Fax: (646)998-4073

The Mat King

In-the-Metal Slip Resistant Steel Floor Plate

Technical Data Sheet

Page 5 of 5

Product Pictures: In-the-Metal Slip Resistant Steel Floor Plate in the field and ready to install and use.

