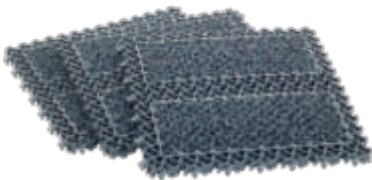


3M Building and Commercial Services Division  
3M™ Nomad™ Modular Matting System 9200

# Inventive Design, Reliable Performance



## **Innovative Solution for Recessed Wells**

3M™ Nomad™ Modular Matting 9200 provides an instant recessed well matting solution that looks as good as it performs. Every building owner wants an attractive and high performing solution for their entrance well. Not everyone needs the durability and performance of an aluminum frame mat, and not everyone can afford it. Less expensive plastic mats exist, but their performance and appearance may not be acceptable. Introducing an attractive and effective solution for your recessed well – the 3M™ Nomad™ Modular Matting 9200.



## 3M™ Nomad™ Modular Matting 9200

This matting system is composed of a series of square shaped tiles that connect together with a snapping lock system. This modular design offers great layout flexibility to fit virtually any recessed well application. Each tile is composed of a high performance flexible vinyl base with two strips of 3M™ Nomad™ carpet matting - a unique combination of dual fibers. These two technologies – scraping and wiping – help result in cleaner building entrances. Like the rest of the 3M™ Nomad™ line of matting, Modular Matting 9200 is designed to deliver impressive cleaning performance in trapping, hiding and holding dirt and moisture.

- Elegant and modern design
- Designed for medium traffic entrances
- Resistant to fire, mildew and UV aging
- Available in 7.87 in x 7.87 in tiles; Gray vinyl base with gray carpet strips

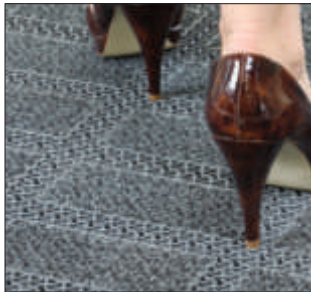


### Easy On-site Installation!

- Tiles lay directly into the recessed well side by side
- Unique 3M design allows the tiles to easily connect, using a screwdriver to snap into place
- Custom fit tiles to virtually any recessed well with a jigsaw

### Easy Maintenance!

Daily vacuuming removes dirt that is easily trapped in the grooves of the vinyl surface. Periodically, mop the vinyl scraper surface to restore the shine and use a carpet cleaner and extraction equipment on the 3M™ Nomad™ carpet pads to clean them thoroughly.



### Passes the “high heel test”!

The vinyl base is designed with grooves large enough to effectively trap and hold dirt, but small enough to help prevent pointed high heels from getting stuck in the grooves.

Product No	Description	Color	Size	UPC No.	Units per pkg/case
9200	Nomad™ Modular Matting	Gray	7.87 in x 7.87 in	50048011594908	10/cs

Please see our 3M™ Nomad™ Matting catalog, visit our web site at [www.3M.com/modularmatting](http://www.3M.com/modularmatting), or talk with your 3M sales representative for more detailed system information and selection guides.



### Building and Commercial Services Division

3M Center  
St. Paul, MN 55144-1000  
(800) 852-9722  
[www.3M.com/modularmatting](http://www.3M.com/modularmatting)

Please recycle. Printed in USA.  
3M and Nomad are trademarks of 3M.  
© 3M 2009. All rights reserved.  
78-8134-0393-4 (109.6937)ii